

FASHION DESIGNING

Assessment Package

National Vocational
Certificate Level 2

Version 1 - March 2014

Published by

National Vocational and Technical Training Commission
Government of Pakistan

Headquarter

Plot 38, Kirthar Road, Sector H-9/4, Islamabad, Pakistan
www.navttc.org

Responsible

Director General Skills Standard and Curricula, National Vocational and Technical Training Commission
National Deputy Head, TVET Reform Support Programme, Deutsche Gesellschaft für Internationale
Zusammenarbeit (GIZ) GmbH

Layout & design

SAP Communications

Photo Credits

TVET Reform Support Programme

URL links

Responsibility for the content of external websites linked in this publication always lies with their respective publishers. TVET Reform Support Programme expressly dissociates itself from such content.

This document has been produced with the technical assistance of the TVET Reform Support Programme, which is funded by the European Union, the Embassy of the Kingdom of the Netherlands, the Federal Republic of Germany and the Royal Norwegian Embassy and has been commissioned by the German Federal Ministry for Economic Cooperation and Development (BMZ). The Deutsche Gesellschaft für Internationale Zusammenarbeit (GIZ) GmbH in close collaboration with the National Vocational and Technical Training Commission (NAVTTTC) as well as provincial Technical Education and Vocational Training Authorities (TEVTAs), Punjab Vocational Training Council (PVTC), Qualification Awarding Bodies (QABs) and private sector organizations.

Document Version

August, 2015

Islamabad, Pakistan



FASHION DESIGNING

Assessment Package

National Vocational
Certificate Level 2

Version 1 - March 2014



ASSESSMENT MATERIAL

EVIDENCE GUIDE

Qualification

Fashion Designing

CS Code:

Level: 3

Credit: 21

Version: 1

CREATE SURFACE DESIGN

CONTENTS

1. Assessment Summary and Record
2. Candidate Assessment
3. Assessor Judgment Guide
4. List of required tools/ equipment, material and context of assessment

ASSESSMENT AND ASSESSOR DETAILS

Competent

☐

Not Yet Competent

☐

Assessment

☐

Re-Assessment

☐

Assessor's Name

Assessor's Code

Assessor's Signature

Date

DD	MM							YYYY	

CANDIDATE DETAILS

Candidate's Name

First Name

Last Name

Father's Name

Institute Name and District

CNIC/BFORM #

--	--	--	--	--	--	--	--	--	--	--	--	--	--	--

Registration Number issued by Assessment Body

Gender

Male

☐

Female

☐

Transgender

☐

Candidate's Consent

I agree to the time and date of the assessment and am aware of the requirements of the assessment. I fully understand my rights of appeal.

Candidate's Signature

ASSESSMENT RESULTS SUMMARY FORM

You can use this coversheet as an *Assessment Results Summary Form*. Simply post a photocopy of this completed coversheet to **NAVTTTC**

NAVTTTC OFFICE ONLY

1. DATE FORM RECEIVED:

DD	MM							YYYY	

2. DATE ENTERED INTO DATABASE:

DD	MM							YYYY	

1

ASSESSMENT SUMMARY & RECORD

ACTIVITY	METHOD				DESIRED OUTCOMES	RESULT	
NATURE OF ACTIVITY	WRITTEN	ORAL	PORTFOLIO	OBSERVATION	DESIRED OUTCOMES FOR SUCCESSFUL ASSESSMENT OF COMPETENCY STANDARD: CREATE SURFACE DESIGN	COMPETENT	NOT YET COMPETENT
Practical Skill Demonstration				✓	<ul style="list-style-type: none"> Create Surface Design 		
Knowledge Assessment	✓	✓			<ul style="list-style-type: none"> Answer all questions your assessor may have during the practical assessment 		
Other Requirement					<ul style="list-style-type: none"> NA 		

Candidate's Name.....Father's Name

ALL WORK ASSESSED IN THIS COMPETENCY STANDARD MUST BE YOUR OWN WORK.

GUIDANCE TO CANDIDATE

To meet this standard you are required to complete the following tasks within **five hours** timeframe:

- Create surface design by making a geometric pattern using the following elements of design on A3 Size Sketch Sheet / files.
 - ✓ Principles of designs.
 - ✓ Pattern repeat
 - ✓ Color application

ACTIVITIES	CANDIDATE RESPONSE
1. Complete practical task of "Create Surface Design" under observation by an assessor	<p>During a practical assessment, under observation by an assessor, I will correctly :</p> <ul style="list-style-type: none"> • Create surface design by using the following tasks of design on A3 Size Sketch Sheet / files. <ul style="list-style-type: none"> ✓ Maintain harmony in the design pattern. ✓ Balance proportions of the design pattern. ✓ Combine geometric shapes to create a geometric pattern. ✓ Make the surface pattern in 4"x4" box using any repeat (e.g. mirror, block, one by half) ✓ Apply secondary and complimentary colors in the created geometric pattern.
2. Answer any questions your Assessor may have during the practical assessment	My answers to questions are correct and demonstrate my understanding of the topics and their application.
3. Other Requirement	NA

Candidate's Name Father's Name.....

**INSTRUCTIONS
FOR
ASSESSOR**

THIS SECTION CONTAINS MINIMUM EVIDENCE REQUIREMENTS.
Oral questioning may be used to clarify candidate understanding of the topic and its application .

ACTIVITIES	MINIMUM EVIDENCE REQUIRED	YES	NO	ASSESSOR COMMENTS
1. Complete practical task of "Create Surface Design" under observation by an assessor	During a practical assessment, under observation by an assessor, the candidate correctly carried out the following tasks:			
Create Surface Design	Maintained harmony in the design pattern.			
	Balanced proportions of the design pattern.			
	Combined geometric shapes to create a geometric pattern.			
	Made the surface pattern in 4"x4" box using any repeat (e.g. mirror, block, one by half)			
	Applied secondary and complimentary colors in the created geometric pattern.			
2. Other Requirement	NA			
3. Answer any questions the Assessor may have during the practical assessment	Candidate's answers to questions are correct and demonstrate understanding of the topics and their application.			

4

LIST OF TOOLS, EQUIPMENT, MATERIAL AND CONTEXT OF ASSESSMENT

INSTRUCTIONS	<p>This section contains information regarding;</p> <ul style="list-style-type: none"> Context of the assessment List of required tools and equipment. List of consumable items required during the service
1. Context of Assessment	This task will be performed in real time environment.

2. List of tools and equipment required (for five candidates)		
S. No	Items	Quantity
1	Scale	As per Requirement
2	Sketch Board	5
3	Palette	5
4	Sharpener	5
5	Set Square	5

3. List of consumable items required (for five candidates)		
S. No	Items	Quantity
1	Water Pencil	As per Requirement
2	Eraser	As per Requirement
4	Poster Paints	As per Requirement
5	Brush	As per Requirement
6	Sketch Book	As per Requirement
7	Tracing sheets	As per Requirement
8	Led pencil	



ASSESSMENT MATERIAL

EVIDENCE GUIDE

Qualification

Fashion Designing

CS Code:

Level: 3

Credit: 16

Version: 1

FASHION ILLUSTRATIONS AND TECHNICAL DRAWINGS

CONTENTS

1. Assessment Summary and Record
2. Candidate Assessment
3. Assessor Judgement Guide
4. List of required tools/ equipment, material and context of assessment

ASSESSMENT AND ASSESSOR DETAILS

Competent

☐

Not Yet Competent

☐

Assessment

☐

Re-Assessment

☐

Assessor's Name

Assessor's Code

Assessor's Signature

Date

DD		MM		YYYY					

CANDIDATE DETAILS

Candidate's Name

First Name

Last Name

Father's Name

Institute Name and District

CNIC/BFORM #

--	--	--	--	--	--	--	--	--	--	--	--	--	--	--	--	--	--

Registration Number issued by Assessment Body

Gender

Male

☐

Female

☐

Transgender

☐

Candidate's Consent

I agree to the time and date of the assessment and am aware of the requirements of the assessment. I fully understand my rights of appeal.

Candidate's Signature

ASSESSMENT RESULTS SUMMARY FORM

You can use this coversheet as an *Assessment Results Summary Form*. Simply post a photocopy of this completed coversheet to **NAVTTTC**

NAVTTTC OFFICE ONLY

1. DATE

FORM RECEIVED:

DD		MM		YYYY					

2. DATE ENTERED INTO

DATABASE:

DD		MM		YYYY					

1

ASSESSMENT SUMMARY & RECORD

ACTIVITY	METHOD				DESIRED OUTCOMES	RESULT	
NATURE OF ACTIVITY	WRITTEN	ORAL	PORTFOLIO	OBSERVATION	DESIRED OUTCOMES FOR SUCCESSFUL ASSESSMENT OF COMPETENCY STANDARD: ILLUSTRATE THE FASHION AND TECHNICAL DRAWINGS	COMPETENT	NOT YET COMPETENT
Practical Skill Demonstration				✓	<ul style="list-style-type: none"> Illustrate the Fashion and Technical Drawings 		
Knowledge Assessment	✓	✓			<ul style="list-style-type: none"> Answer all questions your assessor may have during the practical assessment 		
Other Requirements			✓		<ul style="list-style-type: none"> NA 		

2

CANDIDATE ASSESSMENT

Candidate's Name.....Father's Name

ALL WORK ASSESSED IN THIS COMPETENCY STANDARD MUST BE YOUR OWN WORK.

GUIDANCE TO CANDIDATE

To meet this standard you are required to complete the following tasks within **five hours** timeframe:

- Draw a basic fashion croqui and Illustrate lady's skirt (standard size).and Make technical drawing of provided Lady's skirt design.

ACTIVITIES	CANDIDATE RESPONSE
1. Complete practical task of "Fashion Illustrations and Technical Drawings "under observation by an assessor	<p>During a practical assessment, under observation by an assessor, I will correctly :</p> <ul style="list-style-type: none"> • Illustrate the fashion and technical Drawings for lady's skirt (standard size). <ul style="list-style-type: none"> ✓ Lay tracing paper over a full-body picture of a model from any magazine and use trace around the perimeter of her body. ✓ Draw lines to show the angles of her shoulders and hips. ✓ Trace a center line down the front of her body and draw an oval for the head. ✓ Break your figure down into basic shapes, using two trapezoids for the torso and cylinders for the arms and legs, as in "a" in the figure of Annexure-A. Include circles for the elbows and knees for illustration. ✓ Remove the tracing paper from model. ✓ Redraw fashion model freehand, on a piece of sketch paper, but lengthen the following <ul style="list-style-type: none"> ✓ Torso ✓ Arms ✓ Legs. ✓ Draw over the areas of the body that you want to show by using pen. Erase the pencil lines as in Annexure-A figure b. ✓ Illustrate croquis with Lady's Skirt. ✓ Make technical drawings of designed Lady's Skirt.
3. Answer any questions your Assessor may have during the practical assessment	My answers to questions are correct and demonstrate my understanding of the topics and their application.

Candidate's Name Father's Name.....

**INSTRUCTIONS
FOR
ASSESSOR**

This section contains minimum evidence requirements. Oral questioning may be used to clarify candidate understanding of the topic and its application.

ACTIVITIES	MINIMUM EVIDENCE REQUIRED	YES	NO	ASSESSOR COMMENTS
1. Complete practical task of "Fashion Illustrations and Technical Drawings" under observation by an assessor	During a practical assessment, under observation by an assessor, the candidate correctly carried out the following tasks:			
Illustrate the Fashion and Technical Drawings	Laid tracing paper over a full-body picture of a model from any magazine and use trace around the perimeter of her body.			
	Drew lines to show the angles of her shoulders and hips.			
	Traced a center line down the front of her body and draw an oval for the head.			
	Break your figure down into basic shapes, using two trapezoids for the torso and cylinders for the arms and legs, as in "a" in the figure of Annexure-A. Include circles for the elbows and knees for illustration.			
	Removed the tracing paper from model.			
	Drew fashion model freehand, on a piece of sketch paper, but lengthen the following <ul style="list-style-type: none"> ➤ Torso ➤ Arms ➤ Legs 			
	Draw over the areas of the body that you want to show by using pen. Erase the pencil lines as in Annexure-A figure b.			
	Illustrated croquis with Lady's Skirt. Make technical drawings of designed Lady's Skirt			
2. Other Requirements	NA			
2. Answer any questions the Assessor may have during the practical assessment	Candidate's answers to questions are correct and demonstrate understanding of the topics and their application.			

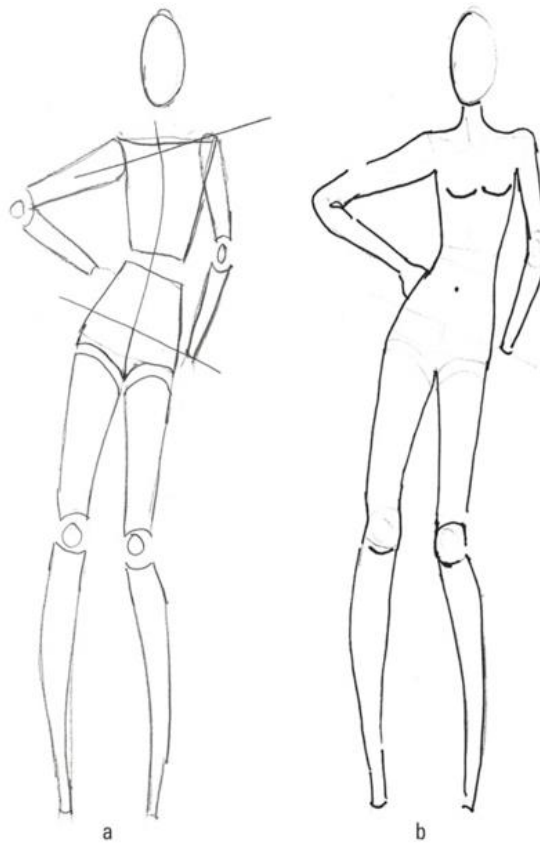
4

LIST OF TOOLS, EQUIPMENT, MATERIAL AND CONTEXT OF ASSESSMENT

INSTRUCTIONS	<p>This section contains information regarding;</p> <ul style="list-style-type: none"> Context of the assessment List of required tools and equipment. List of consumable items required during the service
1. Context of Assessment	This task will be performed in real time environment.

2. List of tools and equipment required (for five candidates)		
S. No	Items	Quantity
1	Thumb pins	As per Requirement
2	Paint Brushes	5
3	color palette,	5
4	Magazines	5
5	water container	5
6	Scale	5
7	Compass	5
8	Drawing board	5

3. List of consumable items required (for five candidates)		
S. No	Items	Quantity
1	Drawing sheets	5
2	Drawing pencils	5
3	Eraser	5
4	Water color pencils	As per Requirement
5	poster paints	As per Requirement
6	Fel tip pens	As per Requirement





ASSESSMENT MATERIAL

EVIDENCE GUIDE

Qualification

Fashion Designing

CS Code:

Level: 2

Credit: 24

Version: 1

PERFORM SURFACE ORNAMENTATION TECHNIQUES

CONTENTS

1. Assessment Summary and Record
2. Candidate Assessment
3. Assessor Judgement Guide
4. List of required tools/ equipment, material and context of assessment

ASSESSMENT AND ASSESSOR DETAILS

Competent

☐

Not Yet Competent

☐

Assessment

☐

Re-Assessment

☐

Assessor's Name

Assessor's Code

Assessor's Signature

Date

DD		MM		YYYY					

CANDIDATE DETAILS

Candidate's Name

First Name

Last Name

Father's Name

Institute Name and District

CNIC/BFORM #

--	--	--	--	--	--	--	--	--	--	--	--	--	--	--

Registration Number issued by Assessment Body

Gender

Male

☐

Female

☐

Transgender

☐

Candidate's Consent

I agree to the time and date of the assessment and am aware of the requirements of the assessment. I fully understand my rights of appeal.

Candidate's Signature

ASSESSMENT RESULTS SUMMARY FORM

You can use this coversheet as an *Assessment Results Summary Form*. Simply post a photocopy of this completed coversheet to **NAVTTTC**

NAVTTTC OFFICE ONLY

1. DATE

FORM

RECEIVED:

DD		MM		YYYY					

2. DATE ENTERED INTO

DATABASE:

DD		MM		YYYY					

1

ASSESSMENT SUMMARY & RECORD

ACTIVITY	METHOD				DESIRED OUTCOMES	RESULT	
NATURE OF ACTIVITY	WRITTEN	ORAL	PORTFOLIO	OBSERVATION	DESIRED OUTCOMES FOR SUCCESSFUL ASSESSMENT OF COMPETENCY STANDARD: PERFORM SURFACE ORNAMENTATION TECHNIQUES	COMPETENT	NOT YET COMPETENT
Practical Skill Demonstration				✓	<ul style="list-style-type: none"> Perform Surface Ornamentation Techniques. 		
Other requirements			✓		<ul style="list-style-type: none"> NA 		
Knowledge Assessment	✓	✓			<ul style="list-style-type: none"> Answer all questions your assessor may have during the practical assessment 		

Candidate's Name.....Father's Name

ALL WORK ASSESSED IN THIS COMPETENCY STANDARD MUST BE YOUR OWN WORK.

GUIDANCE TO CANDIDATE

To meet this standard you are required to complete the following tasks within **five hours** timeframe:

- Apply Surface Ornamentation techniques of fabric dyeing, block printing, fabric painting, screen printing (open screen) and embellishment on cotton fabric. Use given geometric design.

ACTIVITIES	CANDIDATE RESPONSE
1. Complete practical task of "Perform Surface Ornamentation Techniques" under observation by an assessor	<p>During a practical assessment, under observation by an assessor, I will correctly :</p> <ul style="list-style-type: none"> • Apply Surface Ornamentation techniques of fabric dyeing and block printing on fabric. <ul style="list-style-type: none"> • Fabric Dyeing <ul style="list-style-type: none"> ✓ Collect the material for dyeing ✓ Prepare cotton dyeing material as per requirement ✓ Tie the fabric in circular design before dyeing ✓ Mix dye in hot water container ✓ Add fixative . ✓ Add fabric and mix periodically until required result. ✓ Drain and rinse fabric ✓ Iron the fabric • Block printing. <ul style="list-style-type: none"> ✓ Chose the desired blocks from provided blocks. ✓ Prepare color pigment for block printing ✓ Fix the fabric for block printing on a flat table. ✓ Apply block printing on the fabric according to continue repeat. ✓ Steam/iron the printed fabric. • Fabric painting <ul style="list-style-type: none"> ✓ Prepare the provided cotton fabric for painting. ✓ Stretch the fabric on the frame ✓ Outline the basic four petal floral design with paint/ gutta led, so that paint won't seep out the line. ✓ Mix fabric paints for application. ✓ Apply fixer on the cotton fabric. ✓ Apply paint within the outline of the traced design. • Screen printing (open screen) <ul style="list-style-type: none"> ✓ Prepare color pigment for screen printing ✓ Draw and cut stencils of 4 basic geometric shapes for printing. ✓ Fix fabric on a flat platform. ✓ Place stencil on the fabric. ✓ Place screen on the stencil. ✓ Pour color on screen and apply the pigment with the help of squeegee. ✓ Remove screen and fix the printed area with steam/ironing the fabric. • Embellishment <ul style="list-style-type: none"> ✓ Select the embellishment material according to the design requirement.(embroidery threads, beads or sequences) ✓ Embellish the fabric with chosen material and its required technique. (hand embroidery/hand frame work)
2. Answer any questions your Assessor may have during the practical assessment	<p>My answers to questions are correct and demonstrate my understanding of the topics and their application.</p>

3

ASSESSOR JUDGEMENT GUIDE

Candidate's Name Father's Name.....

INSTRUCTIONS FOR ASSESSOR

This section contains minimum evidence requirements. Oral questioning may be used to clarify candidate understanding of the topic and its application.

ACTIVITIES	MINIMUM EVIDENCE REQUIRED	YES	NO	ASSESSOR COMMENTS
1. Complete practical task of "Perform Surface Ornamentation Techniques" under observation by an assessor	During a practical assessment, under observation by an assessor, the candidate correctly carried out the following tasks:			
Fabric dyeing	Collected the material			
	Prepared cotton dyeing material			
	Tied the fabric in circular design.			
	Mixed Dye in hot water contain			
	Added fixative.			
	Added fabric and mix periodically until required result			
	Drained and rinse fabric			
	Ironed the fabric			
Block printing	Chosen the desired blocks from provided blocks.			
	Prepared color pigment for block printing			
	Pined the fabric for block printing on a flat table.			
	Applied block printing on the fabric according to continue repeat.			
	Steamed / ironed the printed fabric			
Fabric painting	Prepared the cotton fabric for painting.			
	Stretched the fabric on the frame			
	Outlined the four petal floral design with paint/gutta led, so that paint won't seep out the line.			
	Mixed fabric paints for application.			
	Applied fixer on the fabric.			
	Applied paint within the outline of the traced design.			
	Prepared color pigment for screen printing			

	Drawn and cut stencils of 4 basic geometric shapes for printing.			
Screen printing (open screen)	Fixed fabric on a flat platform.			
	Placed stencil on the fabric.			
	Place screen on the stencil.			
	Poured color on screen and apply the pigment with the help of squeegee.			
	Removed screen and fix the printed area with steam/ironing the fabric.			
Embellishment	Selected the embellishment material according to the design requirement.(embroidery threads, beads or sequences)			
	Embellished the fabric with chosen material and its required technique. (hand embroidery/hand frame work)			
3. Answer any questions the Assessor may have during the practical assessment	Candidate's answers to questions are correct and demonstrate understanding of the topics and their application.			

4

LIST OF TOOLS, EQUIPMENT, MATERIAL AND CONTEXT OF ASSESSMENT

INSTRUCTIONS	This section contains information regarding; <ul style="list-style-type: none"> Context of the assessment List of required tools and equipment. List of consumable items required during the service
1. Context of Assessment	This task will be performed in real time environment.

2. List of tools and equipment required (for five candidates)		
S. No	Items	Quantity
1	Wooden stick	5
2	Stove	5
3	Containers	5
4	Fabric scissor	5
5	Iron	5
6	Brushes	5
7	Palette	5
8	Water container	5
9	Common pin/ punching tool	5
10	Piece of sponge	5
11	Sharpener	5

3. List of consumable items required (for five candidates)		
S. No	Items	Quantity
1	Fabric	As per Requirement
2	Fabric dyes	As per Requirement
3	Tying thread	As per Requirement
4	Salt	As per Requirement
5	Tracing paper/carbon paper	
6	Phenyl.	As per Requirement



ASSESSMENT MATERIAL

EVIDENCE GUIDE

Qualification

Fashion Designing

CS Code:

Level: 3

Credit: 32

Version: 1

MAKE BASIC BLOCKS AND PATTERNS

CONTENTS

1. Assessment Summary and Record
2. Candidate Assessment
3. Assessor Judgment Guide
4. List of required tools/ equipment, material and context of assessment

ASSESSMENT AND ASSESSOR DETAILS

Competent

☐

Not Yet Competent

☐

Assessment

☐

Re-Assessment

☐

Assessor's Name

Assessor's Code

Assessor's Signature

Date

DD	MM	YYYY							

CANDIDATE DETAILS

Candidate's Name

First Name

Last Name

Father's Name

Institute Name and District

CNIC/BFORM #

--	--	--	--	--	--	--	--	--	--	--	--	--	--	--	--	--	--

Registration Number issued by Assessment Body

Gender

Male

☐

Female

☐

Transgender

☐

Candidate's Consent

I agree to the time and date of the assessment and am aware of the requirements of the assessment. I fully understand my rights of appeal.

Candidate's Signature

ASSESSMENT RESULTS SUMMARY FORM

You can use this coversheet as an *Assessment Results Summary Form*. Simply post a photocopy of this completed coversheet to **NAVTTTC**

NAVTTTC OFFICE ONLY

1. DATE FORM RECEIVED:

DD	MM	YYYY							

2. DATE ENTERED INTO DATABASE:

DD	MM	YYYY							

1

ASSESSMENT SUMMARY & RECORD

ACTIVITY	METHOD				DESIRED OUTCOMES	RESULT	
NATURE OF ACTIVITY	WRITTEN	ORAL	PORTFOLIO	OBSERVATION	DESIRED OUTCOMES FOR SUCCESSFUL ASSESSMENT OF COMPETENCY STANDARD: MAKE BASIC BLOCKS AND PATTERNS	COMPETENT	NOT YET COMPETENT
Practical Skill Demonstration				✓	<ul style="list-style-type: none"> Make Basic Pattern of Blouse. 		
Knowledge Assessment	✓	✓			<ul style="list-style-type: none"> Answer all questions your assessor may have during the practical assessment 		
Other Requirements			✓		<ul style="list-style-type: none"> NA 		

Candidate's Name.....Father's Name

ALL WORK ASSESSED IN THIS COMPETENCY STANDARD MUST BE YOUR OWN WORK.

GUIDANCE TO CANDIDATE

To meet this standard you are required to complete the following tasks within **3.5 hours** timeframe:

- Make Basic Pattern of Blouse, equivalent to a size 6 in Ready to Wear Market(RTW) on 18x30 pattern paper (blouse) according to Annexure-A

ACTIVITIES	CANDIDATE RESPONSE
1. Complete practical task of "Make Basic Blocks And Patterns" under observation by an assessor	<p>During a practical assessment, under observation by an assessor, I will correctly perform following tasks :</p> <ul style="list-style-type: none"> • Measure full body as the following Bust line= 36"; waistline=26"; length of blouse from shoulder to waist= 27"; neckline depth7"; length of sleeves=16"; sleeves opening=9; shoulders 13" • Create basic bodice according to given measurements • Draw the basic block on pattern sheet • Label all the measurements of block bodice and name them • Complete final pattern which includes ease, seams and allowance for fabric
2. Other Requirement	
3. Answer any questions your Assessor may have during the practical assessment	My answers to questions are correct and demonstrate my understanding of the topics and their application.

3

ASSESSOR JUDGEMENT GUIDE

Candidate's Name Father's Name.....

INSTRUCTIONS FOR ASSESSOR

This section contains minimum evidence requirements. Oral questioning may be used to clarify candidate understanding of the topic and its application.

ACTIVITIES	MINIMUM EVIDENCE REQUIRED	YES	NO	ASSESSOR COMMENTS
1. Complete practical task of "Make Basic Blocks And Patterns" under observation by an assessor	During a practical assessment, under observation by an assessor, the candidate correctly carried out the following tasks:			
Make Basic Pattern of Blouse, equivalent to a size 6 in Ready to Wear Market(RTW) on 18x30 pattern paper (blouse) according to Annexure-A	Measured full body as the following Bust line= 36"; waistline=26"; ;length of blouse from shoulder to waist= 27"; neckline depth 7"; length of sleeves=16"; sleeves opening=9; shoulder=13"			
	Create basic bodice according to given measurements			
	Draw the basic block on pattern sheet			
	Label all the measurements of block bodice and name them			
	Complete final pattern which includes ease, seams and allowance for fabric			
2. Other requirements	NA			

3. Answer any questions the Assessor may have during the practical assessment	Candidate's answers to questions are correct and demonstrate understanding of the topics and their application.			
--	---	--	--	--

4

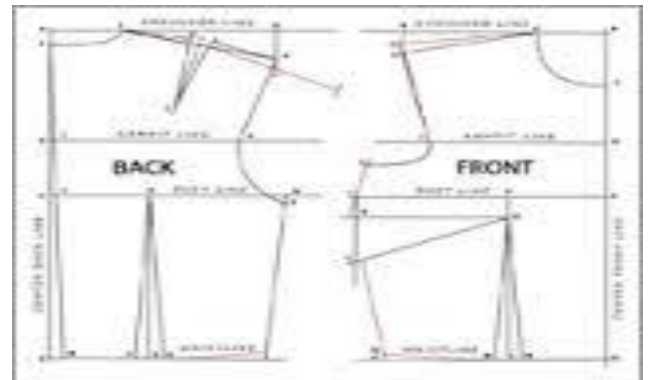
LIST OF TOOLS, EQUIPMENT, MATERIAL AND CONTEXT OF ASSESSMENT

INSTRUCTIONS	<p>This section contains information regarding;</p> <ul style="list-style-type: none"> Context of the assessment List of required tools and equipment. List of consumable items required during the service
1. Context of Assessment	<p>This task will be performed in real time environment.</p>

2. List of tools and equipment required (for five candidates)		
S. No	Items	Quantity
1	Measuring tape.	5
2	Scale	5
3	Set Square	5
4	Clutch Pencil	5
5	Paper Scissors	5
6	Paper Cutter	5
7	Cutting Matt	5
8	Tracing wheel	5

3. List of consumable items required (for five candidates)		
S. No	Items	Quantity
1	Pattern sheets	5
2	pencil/pen	5
3	Tracing paper	As per Requirement
4	Glue	As per Requirement

Annexure-A





ASSESSMENT MATERIAL

EVIDENCE GUIDE

Qualification

Fashion Designing

CS Code:

Level: 3

Credit: 30

Version: 1

PERFORM PATTERN CUTTING AND GARMENT STITCHING

CONTENTS

1. Assessment Summary and Record
2. Candidate Assessment
3. Assessor Judgement Guide
4. List of required tools/ equipment, material and context of assessment

ASSESSMENT AND ASSESSOR DETAILS

Competent

☐

Not Yet Competent

☐

Assessment

☐

Re-Assessment

☐

Assessor's Name

Assessor's Code

Assessor's Signature

Date

DD		MM		YYYY					

CANDIDATE DETAILS

Candidate's Name

First Name

Last Name

Father's Name

Institute Name and District

CNIC/BFORM #

--	--	--	--	--	--	--	--	--	--	--	--	--	--	--	--	--	--

Registration Number issued by
Assessment Body

Gender

Male

☐

Female

☐

Transgender

☐

Candidate's Consent

I agree to the time and date of the assessment and am aware of the requirements of the assessment. I fully understand my rights of appeal.

Candidate's Signature

ASSESSMENT RESULTS SUMMARY FORM

You can use this coversheet as an *Assessment Results Summary Form*. Simply post a photocopy of this completed coversheet to **NAVTTTC**

NAVTTTC OFFICE ONLY

1. DATE
FORM
RECEIVED:

DD		MM		YYYY					

2. DATE ENTERED INTO
DATABASE:

DD		MM		YYYY					

1

ASSESSMENT SUMMARY & RECORD

ACTIVITY	METHOD				DESIRED OUTCOMES	RESULT	
NATURE OF ACTIVITY	WRITTEN	ORAL	PORTFOLIO	OBSERVATION	DESIRED OUTCOMES FOR SUCCESSFUL ASSESSMENT OF COMPETENCY STANDARD: PERFORM PATTERN CUTTING AND GARMENT STITCHING	COMPETENT	NOT YET COMPETENT
Practical Skill Demonstration				✓	<ul style="list-style-type: none"> Stitch a simple lady's straight trouser. 		
Other Requirements			✓		<ul style="list-style-type: none"> NA 		
Knowledge Assessment	✓	✓			<ul style="list-style-type: none"> Answer all questions your assessor may have during the practical assessment 		

2

CANDIDATE ASSESSMENT

Candidate's Name.....Father's Name

ALL WORK ASSESSED IN THIS COMPETENCY STANDARD MUST BE YOUR OWN WORK.

GUIDANCE TO CANDIDATE

To meet this standard you are required to complete the following tasks within **FIVE hours** timeframe:

- Stitch a basic lady's straight trouser according to the following measurements

Waist line 28 inches (full)

Hip line 38 inches (full)

Trouser length 40 inches (full)

Thigh line 17 inches (full)

Leg opening 9 inches (full)

ACTIVITIES	CANDIDATE RESPONSE
1. Complete practical task of "Perform Pattern Cutting and Garment Stitching" under observation by an assessor	<p>During a practical assessment, under observation by an assessor, I will correctly :</p> <ul style="list-style-type: none"> Stitch a basic lady's straight trouser according to the following measurements <ul style="list-style-type: none"> Waist line 28 inches (full) Hip line 38 inches (full) Trouser length 40 inches (full) Thigh line 17 inches (full) Leg opening 9 inches (full) ✓ Make draft of the lady's trouser design by using the measurements mentioned above and create a pattern. ✓ Place the pattern over the folded fabric aligning the back and front panels with the folded edge of the fabric. ✓ Mark the sewing line by outlining the patterns on the fabric using tailors chalk. ✓ Measure and mark the cutting line 1/2 inch away from the Sewing line across the entire outline of the trouser pattern to give ease into the pattern. ✓ Cut both the trouser panels along the outer line meant for cutting. ✓ Prepare the sewing machine to perform sewing. ✓ Perform sewing on marked sewing line. ✓ Finish the sewing.
2. Other Requirement	NA
3. Answer any questions your Assessor may have during the practical assessment	My answers to questions are correct and demonstrate my understanding of the topics and their application.

Candidate's Name Father's Name.....

**INSTRUCTIONS
FOR
ASSESSOR**

This section contains minimum evidence requirements. Oral questioning may be used to clarify candidate understanding of the topic and its application.

ACTIVITIES	MINIMUM EVIDENCE REQUIRED	YES	NO	ASSESSOR COMMENTS
1. Complete practical task of "Perform Pattern Cutting and Garment Stitching" under observation by an assessor	During a practical assessment, under observation by an assessor, I will correctly :			
Stitched a basic lady's straight trouser according to the following measurements Waist line 28 inches (full) Hip line 38 inches (full) Trouser length 40 inches (full) Thigh line 17 inches (full) Leg opening 9 inches (full)	Made draft of the lady's trouser design and used the measurements mentioned above and created a pattern.			
	Placed the pattern over the folded fabric aligning the back and front panels with the folded edge of the fabric.			
	Marked the sewing line by outlining the patterns on the fabric using tailors chalk.			
	Measured and marked the cutting line 1/2 inch away from the Sewing line across the entire outline of the trouser pattern to give ease into the pattern.			
	Cut both the trouser panels along the outer line meant for cutting.			
	Prepared the sewing machine to perform sewing.			
	Performed sewing on marked sewing line.			
	Finished sewing as per design requirement			
2. Other Requirement	NA			
3. Answer any questions the Assessor may have during the practical assessment	Candidate's answers to questions are correct and demonstrate understanding of the topics and their application.			

4

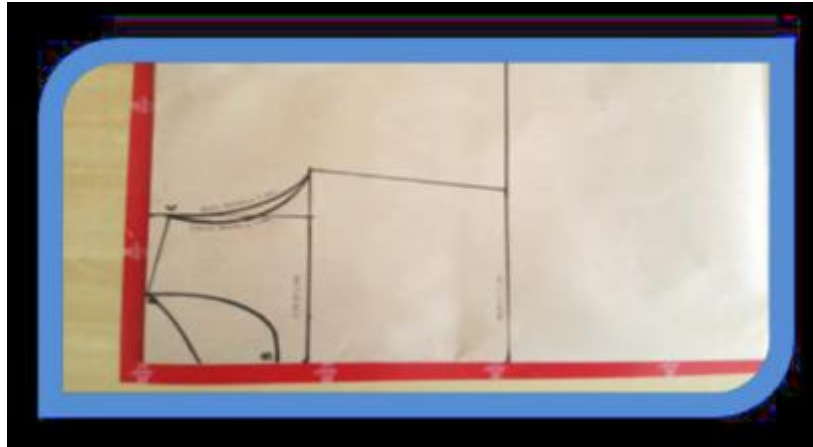
LIST OF TOOLS, EQUIPMENT, MATERIAL AND CONTEXT OF ASSESSMENT

INSTRUCTIONS	<p>This section contains information regarding;</p> <ul style="list-style-type: none"> Context of the assessment List of required tools and equipments. List of consumable items required during the service
1. Context of Assessment	This task will be performed in real time environment.

2. List of tools and equipment required (for five candidates)		
S. No	Items	Quantity
1	Marking pen	5
2	Tailors chalk	5
3	Measuring Tape	5
4	Foot Scale	5
5	French Seam Curve	5
6	Scissors	5
7	Pins	5
8	Tracing wheel	5

3. List of consumable items required (for five candidates)		
S. No	Items	Quantity
1	Pattern sheets	5
2	pencil/pen	5
3	Cotton Cloth:	1 pc 90 cm with 42 cm width
4	Brown paper:	1 Sheet 36"x46"
5	Satin Ribbon:	1 meter
6	Hooks:	3 pcs
7	Polyester thread matching the fabric color:	1 Reel
8	Cotton Cloth:	1 pc 90 cm with 42 cm width
9	Brown paper/pattern sheet	1 Sheet 36"x46"

Annexure-A



Annexure-B



Annexure-C



Annexure-D





ASSESSMENT MATERIAL

EVIDENCE GUIDE

Qualification

Fashion Designing

CS Code:

Level: 2

Credit: 5

Version: 1

PERFORM GARMENT FINISHING

CONTENTS

1. Assessment Summary and Record
2. Candidate Assessment
3. Assessor Judgment Guide
4. List of required tools/ equipment, material and context of assessment

ASSESSMENT AND ASSESSOR DETAILS

Competent

☐

Not Yet Competent

☐

Assessment

☐

Re-Assessment

☐

Assessor's Name

Assessor's Code

Assessor's Signature

Date

DD	MM							YYYY	

CANDIDATE DETAILS

Candidate's Name

First Name

Last Name

Father's Name

Institute Name and District

CNIC/BFORM #

--	--	--	--	--	--	--	--	--	--	--	--	--	--	--

Registration Number issued by Assessment Body

Gender

Male

☐

Female

☐

Transgender

☐

Candidate's Consent

I agree to the time and date of the assessment and am aware of the requirements of the assessment. I fully understand my rights of appeal.

Candidate's Signature

ASSESSMENT RESULTS SUMMARY FORM

You can use this coversheet as an *Assessment Results Summary Form*. Simply post a photocopy of this completed coversheet to **NAVTTTC**

NAVTTTC OFFICE ONLY

1. DATE FORM RECEIVED:

DD	MM							YYYY	

2. DATE ENTERED INTO DATABASE:

DD	MM							YYYY	

1

ASSESSMENT SUMMARY & RECORD

ACTIVITY	METHOD				DESIRED OUTCOMES	RESULT	
NATURE OF ACTIVITY	WRITTEN	ORAL	PORTFOLIO	OBSERVATION	DESIRED OUTCOMES FOR SUCCESSFUL ASSESSMENT OF COMPETENCY STANDARD: PERFORM GARMENT FINISHING	COMPETENT	NOT YET COMPETENT
Practical Skill Demonstration				✓	<ul style="list-style-type: none"> Perform finishing of a garment. 		
Other Requirements			✓		<ul style="list-style-type: none"> NA 		
Knowledge Assessment		✓			<ul style="list-style-type: none"> Answer all questions your assessor may have during the practical assessment 		

2

CANDIDATE ASSESSMENT

Candidate's Name.....Father's Name

ALL WORK ASSESSED IN THIS COMPETENCY STANDARD MUST BE YOUR OWN WORK.

GUIDANCE TO CANDIDATE

To meet this standard you are required to complete the following tasks within **five** timeframe:

- ✓ Perform finishing and packing of the provided stitched Lady's shirt .

ACTIVITIES	CANDIDATE RESPONSE
1. Complete practical task of "Perform Garment Finishing" under observation by an assessor	<p>During a practical assessment, under observation by an assessor, I will correctly :</p> <ul style="list-style-type: none"> • Perform finishing of the provided stitched Lady's Shirt <ul style="list-style-type: none"> ✓ Verify measurements according to pattern ✓ Compare the stitched garment with given pattern measurements. ✓ Check Stitching quality ✓ Verify the seam and seam allowances ✓ Remove unwanted threads from final garment ✓ Verify the Stitch count ✓ Verify the Thread breakage ✓ Verify the Thread over lapping ✓ Verify the Stains and fabric tempering ✓ Verify the necklines symmetry ✓ Verify the hemming ✓ Verify the Puckering ✓ Verify the Stitching alignment ✓ Verify the Over locking ✓ Verify the Button attachments ✓ Verify the Label attachments ✓ Verify the Button holes • Perform Packaging of finished garment <ul style="list-style-type: none"> ✓ Place hang/ price tags on the garment individually. ✓ Iron the final garment properly. ✓ Perform industrial garment folding standards. ✓ Pack the garment using the provided packing material.
2. Answer any questions your Assessor may have during the practical assessment	My answers to questions are correct and demonstrate my understanding of the topics and their application.

Candidate's Name Father's Name.....

**INSTRUCTIONS
FOR
ASSESSOR**

This section contains minimum evidence requirements. Oral questioning may be used to clarify candidate understanding of the topic and its application.

ACTIVITIES	MINIMUM EVIDENCE REQUIRED	YES	NO	ASSESSOR COMMENTS
1. Complete practical task of "Perform Garment Finishing" under observation by an assessor	During a practical assessment, under observation by an assessor, the candidate correctly carried out the following tasks:			
Performed finishing and packing of the provided stitched Lady's Shirt	Verified measurements according to pattern			
	Compared the stitched garment with given pattern measurements.			
	Rechecked the garment after amendments, as per pattern			
	Checked Stitching quality			
	Verified the seam and seam allowances			
	Removed unwanted threads from final garment			
	Verified the Stitch count			
	Verified the Thread breakage			
	Verified the Thread over lapping			
	Verified the Stains and fabric tempering			
	Verified the necklines symmetry			
	Verified the hemming			
	Verified the Puckering			
	Verified the Stitching alignment			
	Verified the Over locking			
	Verified the Button attachments			
	Verified the Label attachments			
	Verified the Button holes			
Perform Packaging of finished garment	Placed hang/ price tags on the garment individually.			
	Ironed the final garment properly.			
	Performed industrial garment folding standards.			
	Packed the garment using the provided packing material.			
2. Other Requirement	NA			

3. Answer any questions the Assessor may have during the practical assessment	Candidate's answers to questions are correct and demonstrate understanding of the topics and their application.			
--	---	--	--	--

4

LIST OF TOOLS, EQUIPMENT, MATERIAL AND CONTEXT OF ASSESSMENT

INSTRUCTIONS	<p>This section contains information regarding;</p> <ul style="list-style-type: none"> ✓ Context of the assessment ✓ List of required tools and equipment. ✓ List of consumable items required during the service
1. Context of Assessment	This task will be performed in real time environment.

2. List of tools and equipment required (for five candidates)		
S. No	Items	Quantity
1	Clippers	5
2	Steam iron	2
3	Hand needles	5
4	Iron table	2
5	Tag machine	1
6	Over lock machine	

3. List of consumable items required (for five candidates)		
S. No	Items	Quantity
1	Sewing threads	5
2	Packing bags	5
3	Tags (brand and size tags)	10



ASSESSMENT MATERIAL

EVIDENCE GUIDE

Qualification

Fashion Designing

CS Code:

Level: 3

Credit: 150

Version: 1

FASHION DESIGNING

CONTENTS

1. Assessment Summary and Record
2. Candidate Assessment
3. Assessor Judgement Guide
4. List of required tools/ equipment, material and context of assessment

ASSESSMENT AND ASSESSOR DETAILS

Competent

☐

Not Yet Competent

☐

Assessment

☐

Re-Assessment

☐

Assessor's Name

Assessor's Code

Assessor's Signature

Date

DD	MM	YYYY							

CANDIDATE DETAILS

Candidate's Name

First Name

Last Name

Father's Name

Institute Name and District

CNIC/BFORM #

--	--	--	--	--	--	--	--	--	--	--	--	--	--	--

Registration Number issued by Assessment Body

Gender

Male

☐

Female

☐

Transgender

☐

Candidate's Consent

I agree to the time and date of the assessment and am aware of the requirements of the assessment. I fully understand my rights of appeal.

Candidate's Signature

ASSESSMENT RESULTS SUMMARY FORM

You can use this coversheet as an *Assessment Results Summary Form*. Simply post a photocopy of this completed coversheet to **NAVTTTC**

NAVTTTC OFFICE ONLY

1. DATE FORM RECEIVED:

DD	MM	YYYY							

2. DATE ENTERED INTO DATABASE:

DD	MM	YYYY							

1

ASSESSMENT SUMMARY & RECORD

ACTIVITY	METHOD				DESIRED OUTCOMES	RESULT	
NATURE OF ACTIVITY	WRITTEN	ORAL	PORTFOLIO	OBSERVATION	DESIRED OUTCOMES FOR SUCCESSFUL ASSESSMENT OF COMPETENCY STANDARD: APPLY FASHION DESIGNING	COMPETENT	NOT YET COMPETENT
Practical Skill Demonstration				✓	<ul style="list-style-type: none"> Make Draft of a Simple Baby's Frock. Make Pattern of a Simple Baby's Frock. Stitch a Simple Baby's Frock. 		
Other Requirements					<ul style="list-style-type: none"> NA 		
Knowledge Assessment	✓	✓			<ul style="list-style-type: none"> Answer all questions your assessor may have during the practical assessment 		

Candidate's Name.....Father's Name

ALL WORK ASSESSED IN THIS COMPETENCY STANDARD MUST BE YOUR OWN WORK.

GUIDANCE TO CANDIDATE

To meet this standard you are required to complete the following tasks within **five hours** timeframe:

- Make Draft of a simple baby's frock according to the measurements mentioned below.
- Make Pattern of a simple baby's frock according to the measurements mentioned below.
- Stitch a simple baby's frock according to the following measurements

Across Shoulder	10 inches
Chest	22 inches
Waist	18 inches
Length of Frock	22 inches
Body Length	10 inches
- Design frock on illustration with the help of techniques given below
 - Block printing
 - Tie n dye
- Develop two techniques block printing and tie n dye in baby frock

ACTIVITIES	CANDIDATE RESPONSE
1. Complete practical task of "Fashion Designing" under observation by an assessor	<p>During a practical assessment, under observation by an assessor, I will correctly :</p> <ul style="list-style-type: none"> • Draft Making <ul style="list-style-type: none"> ✓ Take a brown paper measuring 36"x 46" size ✓ Fold brown paper into half width-wise , folded sheet measures 18"x 46 ✓ Mark a starting point at the corner of brown paper ✓ Measure and mark a point at 1/2 of Shoulder length (5 inches) width-wise from the starting point. ✓ Draft for chest line measuring width-wise make a point at ¼ of chest plus 1.5 inches ✓ Mark a point measuring the full length of the Frock (22 inches) from the starting point across the length of the fabric. ✓ Measure and mark the Waist point at 10 inches (Body Length) length-wise from the starting point. ✓ Draft shoulder drop and back panel neck line according to the measurements. ✓ Finish the final draft as in Annexure-A • Pattern Making <ul style="list-style-type: none"> ✓ Cut the Pattern into four pieces , as in Annexure-B • Dyed the fabric <ul style="list-style-type: none"> ✓ Take fabric piece then tie the fabric according to desired design. ✓ Select the color (1 tsp for 2.5m fabric) and prepare the mixture to dye the fabric. ✓ Rinse out the fabric with cold water for (fixing the color) ✓ Dry and then press the fabric and prepare for the next procedure • Block print the fabric <ul style="list-style-type: none"> ✓ Fix the dye fabric on table with the help of pins ✓ Pour the color on printing tray ✓ Take blocks according to desired design ✓ Tap the blocks on to the block printing color tray ✓ Apply the blocks on to the fabric • Fabric Pattern <ul style="list-style-type: none"> ✓ Fold the piece of Fabric width-wise into half with the wrong side up and the right sides facing each other.

	<ul style="list-style-type: none"> ✓ Place the pattern above it aligning the back and front panels with the folded edge of the fabric ✓ Mark the outlines of the patterns on the fabric using tailors chalk, sewing line. ✓ Measure and mark another line 1/2 inch away from the Sewing line across the entire outline of both the panels, cutting line. ✓ • Fabric Cutting <ul style="list-style-type: none"> ✓ Cut both the frock panels along the outer line meant for cutting as in Annexure-C • Sewing <ul style="list-style-type: none"> ✓ Place the Facing for front and back neck respectively on the neck cut of the main panels of the frock ✓ Stitch the facing and frock panel together for front and back necklines at a distance of ¼ inches away from the edge ✓ Stitch the shoulder lines ½ inch away from the edge of the fabric. ✓ Take the 1 inch width cross piece and stitch it on the wrong side of the arm hole. Turn it and then stitch again ✓ Take the back panel of the frock separate and fold it. Cut an opening in form of a straight line right at the center. ✓ Place the piece measuring 3/4 inches on the left side of the back panel and stitch. Place the other 1 1/2 inch piece of the right side of the back panel. ✓ Finish the sewing as in Annexure-D
3. Answer any questions your Assessor may have during the practical assessment	My answers to questions are correct and demonstrate my understanding of the topics and their application.

Candidate's Name Father's Name.....

**INSTRUCTIONS
FOR
ASSESSOR**

This section contains minimum evidence requirements. Oral questioning may be used to clarify candidate understanding of the topic and its application.

ACTIVITIES	MINIMUM EVIDENCE REQUIRED	YES	NO	ASSESSOR COMMENTS
1. Complete practical task of "Fashion Designing" under observation by an assessor	During a practical assessment, under observation by an assessor, the candidate correctly carried out the following tasks:			
Draft Making	Took a brown paper measuring 36"x 46" size			
	Made draft of the baby's frock by using the measurements mentioned above, as in Annexure-A			
	Took a brown paper measuring 36"x 46" size			
	Folded brown paper into half width-wise , folded sheet measures 18"x 46			
	Marked a starting point at the corner of brown paper			
	Measured and mark a point at 1/2 of shoulder length (5 inches) width-wise from the starting point.			
	Drafted for chest line measuring width-wise make a point at ¼ of chest plus 1.5 inches			
	Marked a point measuring the full length of the Frock (22 inches) from the starting point across the length of the fabric.			
	Measured and marked the Waist point at 10 inches (Body Length) length-wise from the starting point.			
	Drafted shoulder drop and back panel neck line according to the measurements.			
	Finished the final draft as in Annexure-A			
Pattern Making	Cut the Pattern into four pieces after the draft making, as in Annexure-B			
Dyed the fabric	Take fabric piece then tie the fabric according to desired design.			
	Selected the color (1 tsp for 2.5m fabric) and prepare the mixture to dye the fabric			
	Rinsed out the fabric with cold water for (fixing the color)			
	Dried and then press the fabric and prepare for the next procedure			
Block print the fabric	Fixed the dye fabric on table with the help of pins			
	Poured the color on printing tray			
	Took blocks according to desired design			
	Tapped the blocks on to the block printing color tray			
	Apply the blocks on to the fabric			
Fabric Pattern	Folded the piece of Fabric width-wise into half with the wrong side up and the right sides facing each other.			

	Placed the pattern above it aligning the back and front panels with the folded edge of the fabric			
	Marked the outlines of the patterns on the fabric using tailors chalk, sewing line.			
	Measured and mark another line 1/2 inch away from the Sewing line across the entire outline of both the panels, cutting line			
Fabric Cutting	Cut both the frock panels along the outer line meant for cutting as in Annexure-C			
Sewing	Placed the Facing for front and back neck respectively on the neck cut of the main panels of the frock			
	Stitched the facing and frock panel together for front and back necklines at a distance of ¼ inches away from the edge			
	Took the 1 inch width cross piece and stitch it on the wrong side of the arm hole. Turned it and then stitched again			
	Took the back panel of the frock separate and folded it. Cut an opening in form of a straight line right at the center			
	Placed the piece measuring 3/4 inches on the left side of the back panel and stitch. Placed the other 1 1/2 inch piece of the right side of the back panel			
	Finished the sewing as in Annexure-D			
2. Other Requirements	NA			
3. Answer any questions the Assessor may have during the practical assessment	Candidate's answers to questions are correct and demonstrate understanding of the topics and their application.			

4

LIST OF TOOLS, EQUIPMENT, MATERIAL AND CONTEXT OF ASSESSMENT

INSTRUCTIONS	<p>This section contains information regarding;</p> <ul style="list-style-type: none"> Context of the assessment List of required tools and equipments. List of consumable items required during the service
1. Context of Assessment	This task will be performed in real time environment.

2. List of tools and equipment required (for five candidates)		
S. No	Items	Quantity
1	Marking pen	5
2	Tailors chalk	5
3	Measuring Tape	5
4	Foot Scale	5
5	French Seam Curve	5
6	Scissors	5
7	Pins	5
8	Stove	5
9	Container	5
10	Wooden stick	5
11	Wooden blocks	5 sets
12	Printing tray	5

3. List of consumable items required (for five candidates)		
S. No	Items	Quantity
1	Pattern sheets	5
2	pencil/pen	5
3	Cotton Cloth:	1 pc 90 cm with 42 cm width
4	Brown paper:	1 Sheet 36"x46"
5	Satin Ribbon:	1 meter
6	Hooks:	3 pcs
7	Polyester thread matching the fabric colour:	1 Reel
8	Cotton Cloth:	1 pc 90 cm with 42 cm width
9	Brown paper:	1 Sheet 36"x46"
10	Thread	As
11	Dye colors	As per Requirement
12	Block printing color	As per Requirement
13	Binder	As per Requirement
14	Blanket for block printing	5

Annexure-A



Annexure-B




Annexure-C







National Vocational and Technical Training Commission (NAV TTC)

 5th Floor Evacuee Trust Complex Sector F-5/1, Islamabad.

 +92 51 9044 04

 +92 51 9044 04

 info@navttc.org

 www.navttc.org